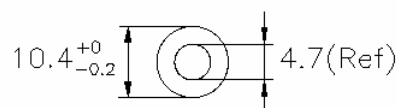
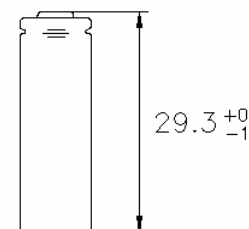


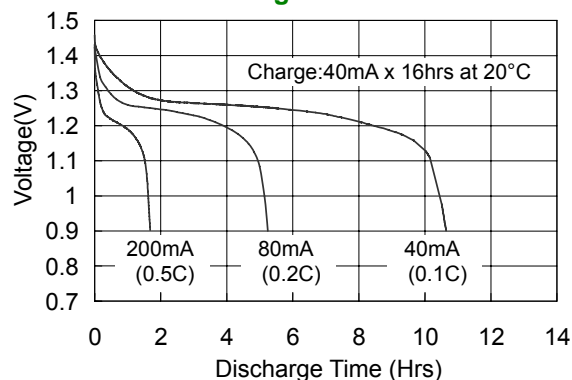
Model No.: **GP40AAAM**



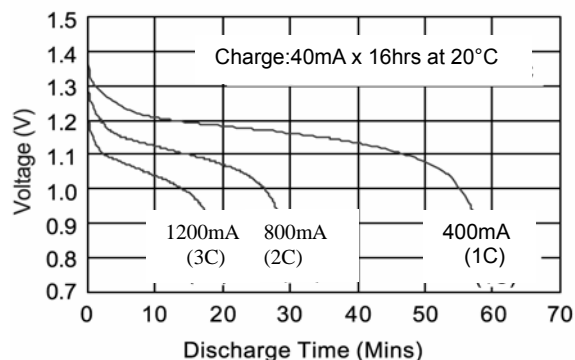
Unit:mm

| | |
|--|---|
| Type | : Rechargeable Nickel Metal Hydride Cylindrical Cell |
| Nominal Dimension (with Sleeve) | : $\Phi = 10.4\text{mm}$ H = 29.3mm |
| Applications | : Recommended discharge current 40 to 1200mA |
| Nominal Voltage | : 1.2V |
| Capacity | : Nominal: 400mAh Minimum: 400mAh Typical: 420mAh When discharged at 80mA to 1.0V at 20°C |
| Charging Condition | : 40mA for 16 hrs at 20°C |
| Fast Charge | : 200mA to 400mA (0.5 to 1C) charge termination control recommended control parameters: - ΔV : 0-5mV **DT/dt : 0.8°C/min (0.5 to 0.9C) 0.8 - 1°C/min (1C) **TCO : 45 - 50°C **Timer : 105% nominal input ** for ref. only |
| Service Life | : >500 cycles (IEC standard) |
| Continuous Overcharge | : 40mA maximum current for 1 year. No conspicuous deformation and/or leakage |
| Weight | : 8.0g |
| Internal Resistance | : Average 65m Ω upon fully charged (Range 48 – 80 m Ω) at 1000Hz |
| Max. Charging Voltage | : 1.5V at 40mA charging |
| Ambient Temperature Range | : Standard Charge : 0 to 45°C Fast Charging : 10 to 45°C Discharge : -20 to 50°C Storage : -20 to 35°C |

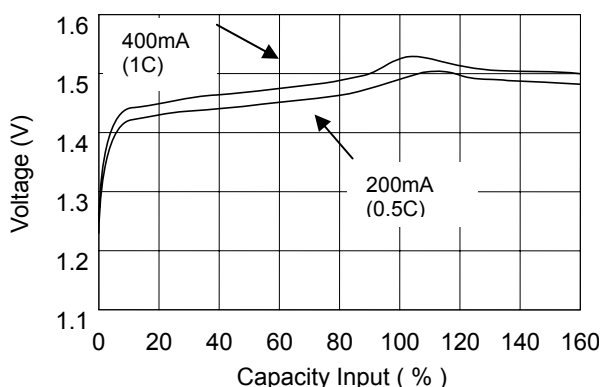
Low Rate Discharge



High Rate Discharge



Fast Charge (Charge control required)



The information (subject to change without prior notice) contained in this document is for reference only and should not be used as a basis for product guarantee or warranty. For applications other than those described here, please consult your nearest GP Sales and Marketing Office or Distributors.